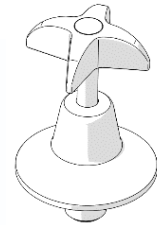


# Vandal Resistant<sup>®</sup> CP Lead Safe<sup>™</sup> 1/2 Turn C/D Wall Top Assembly (Hot/Cold/Warm)

PRODUCT CODE:

- 174.01.07.00



## SPECIFICATIONS

- Chrome plate finish for easy cleaning and durability.
- 1/2 turn ceramic disc.
- Supplied with cold, hot and warm identification buttons.
- Vandal resistant handle featuring a locking ring to secure the handle to the spindle which may only be removed using the key provided.
- Lead Safe<sup>™</sup> brass construction. \*

**IMPORTANT:** All vandal resistant taps are tested in accordance with AS/NZS 3718 and leave our premises in good working order.

\* Our Lead Safe<sup>™</sup> product range is compliant with the Lead-Free Requirements of the NCC 2022 Vol. Three, Clause A5G4(2) and NSF/ANSI 372.

**WARNINGS:** Special attentions to be paid on notes, photos, images, or drawings of assembly steps marked with the warning symbol.



## TECHNICAL DATA


Inlet	5/8" BSP - Male	
Outlet	N/A	
Headwork	Ceramic Disc	
Working Pressure Range (kPa)	Min	50
	Max	500
Working Temperature Range (°C)	Min	5
	Max	65
Nominal Flow Rate (LPM)	N/A	
Finish	Chrome	

**NOTE:** Galvin Engineering continually strive to improve their products. Specifications may change without notice.

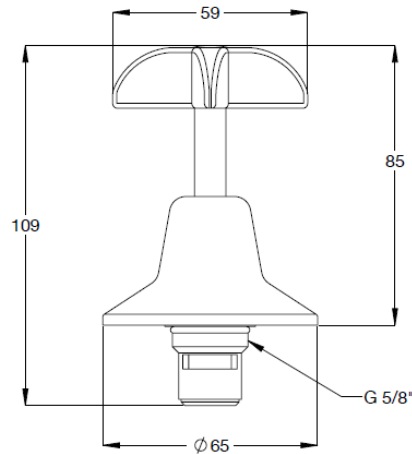
## TOOLS REQUIRED

- Spanner or adjustable crescent
- Thread / Sealant tape

**PRE-INSTALLATION**

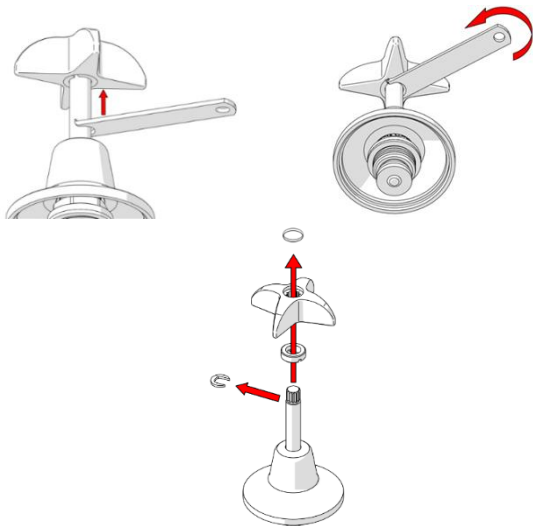
- Before installation, all lines must be flushed.
- Galvin Engineering recommends the installation of strainers and pressure reducing valves (when necessary) to ensure clean consistent supply. Debris or poor water quality could affect the performance of the unit. 

**DIMENSION**



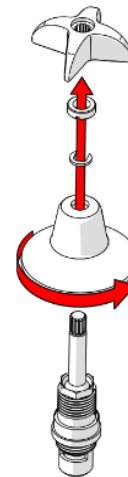
**INSTALLATION**

**INSTALLATION COMPLIANCE:** Galvin Engineering products must be installed in accordance with these installation instructions and in accordance with AS/NZS 3500, the PCA and your local regulatory requirements. Water and/or electrical supply conditions must also comply to the applicable national and/or state standards. Failing to comply with these provisions shall void the product warranty and may affect the performance of the product.



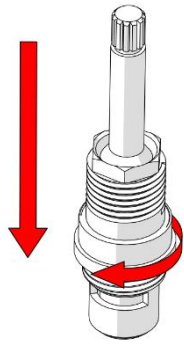
**1. Disassemble handle**

- Follow the images above to remove the handle using the tool provided.



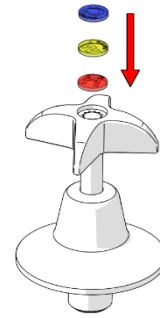
**2. Disassemble**

- Separate wall flange, cartridge and spindle assembly.



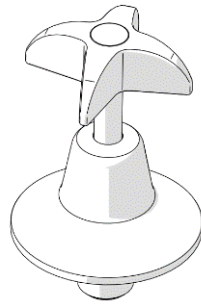
**3. Fit Cartridge and spindle**

- Fit ceramic cartridge and spindle assembly into the female wall connection.
- **Do Not** over tighten.



**4. Re-assemble and fit water temperature indicator**

- Fit the wall flange, circlip, locking ring & handle by reversing steps 2 to 1.
- Once the tap is secure, fit the appropriate water temperature indicator.



**5. Testing**

- Once fitted turn on water and check for leaks and correct operation.

**TROUBLESHOOTING**

PROBLEM	CAUSE	RECTIFICATION
Water is not flowing or inconsistent flow.	Dirt in the cartridge / water supply not on.	Remove debris. Install an inline strainer to stop further blockages. Ensure water supply is turned on.
Continuous flow of water.	Top assembly cartridge loose or internally obstructed or damaged.	Remove cartridge, clean with water and re-grease spindle if required.

## SERVICE AND MAINTENANCE

1. Turn off the water supply and turn on the tap handle to drain water from the bodies.
2. Remove the temperature indicator from the handle.
3. Remove the handle from the tap.
4. Unscrew the top assembly from the body.
5. Check the o-ring on the spindle and the jumper valve for wear and damage. Replace if required.
6. Clean the spindle and body of debris.
7. Place a new o-ring (if required) onto the spindle and re-grease with potable water approved grease.
8. Re-assemble top assembly. Follow the product installation guidelines for the relevant product re-assembly method.

## WARRANTY

Galvin Engineering products are covered under our Manufacturer's Warranty. Galvin Engineering products must be installed in accordance with the installation instructions and in accordance with AS 3500 and NCC Volume Three, relevant Australian Standards and local authorities applicable to product being installed. Water and electrical supply conditions must also comply to the applicable national and/or state standards, failing to comply with these provisions may void the product warranty and affect performance of the product.

Please visit [www.galvinengineering.com.au](http://www.galvinengineering.com.au) to view the full warranty, our Installation Compliance and Maintenance & Cleaning information as well as any other additional information.

Within Australia: **1300 514 074** Outside Australia: P: **+61 (0)8 9338 2344**

F: +61 (0)8 9338 2340

[sales@galvinengineering.com.au](mailto:sales@galvinengineering.com.au)

[www.galvinengineering.com.au](http://www.galvinengineering.com.au)

ABN: 78 008 719 382

PERTH | SYDNEY | MELBOURNE | BRISBANE | ADELAIDE

